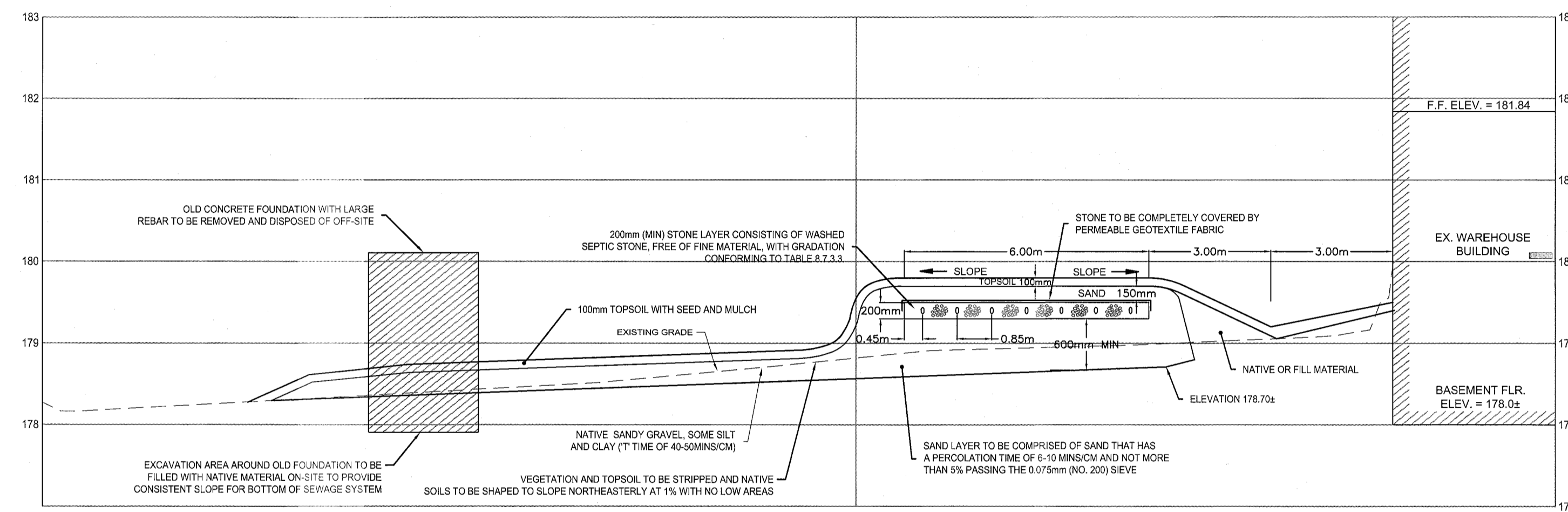
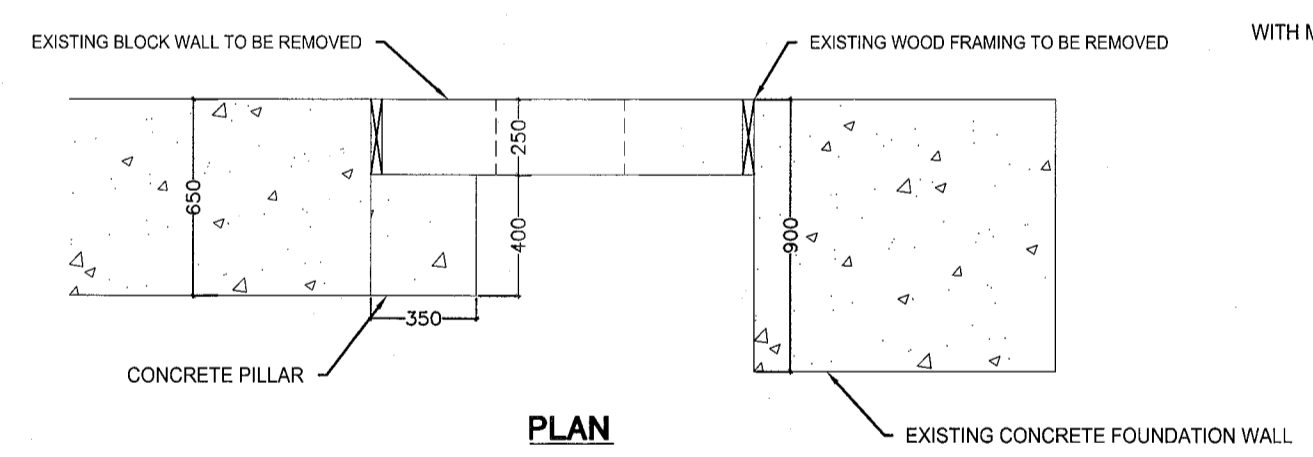


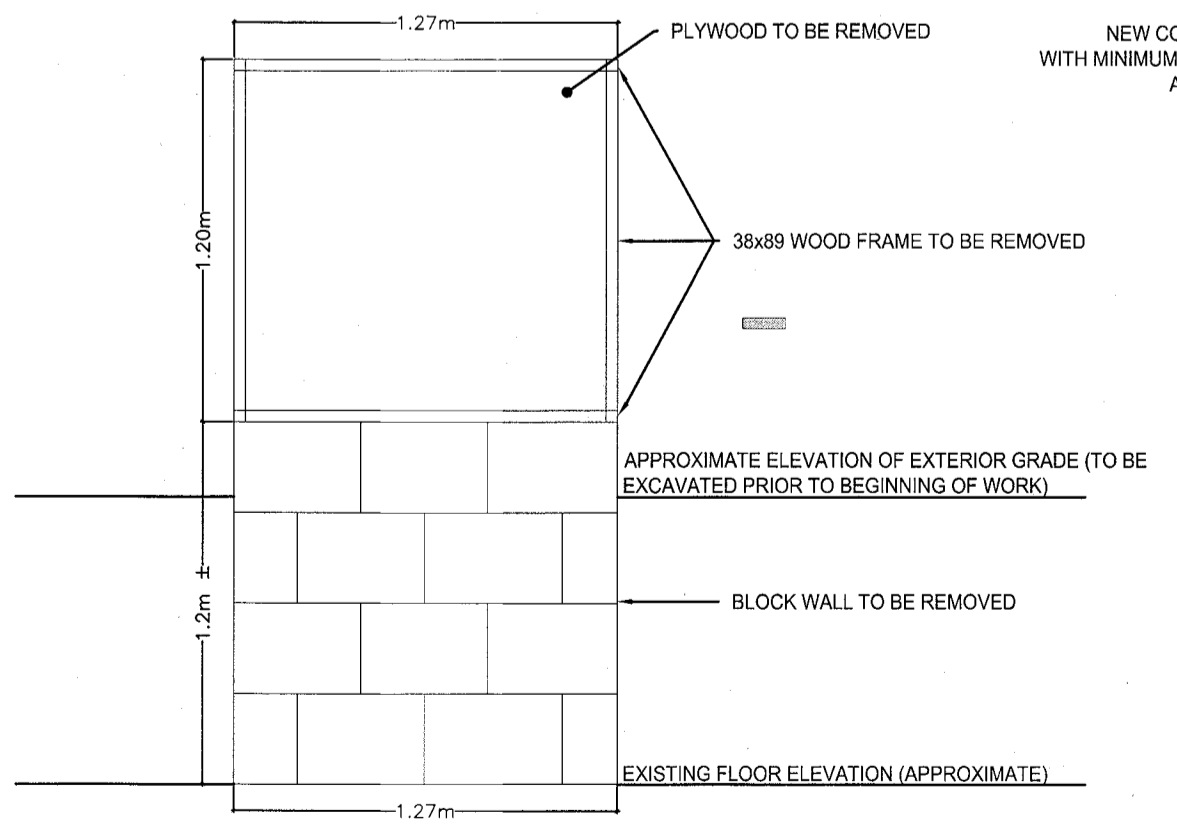
SECTION A-A
HORZ. 1:100
VERT. 1:50



SECTION B-B
HORZ. 1:100
VERT. 1:50

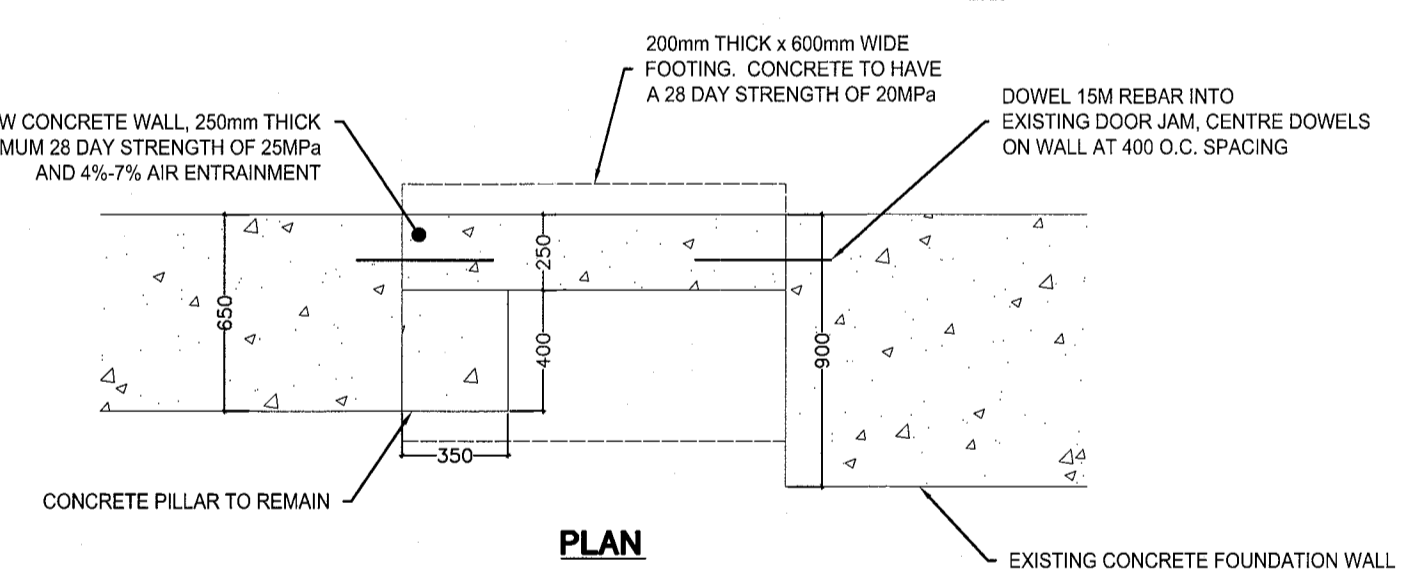


PLAN

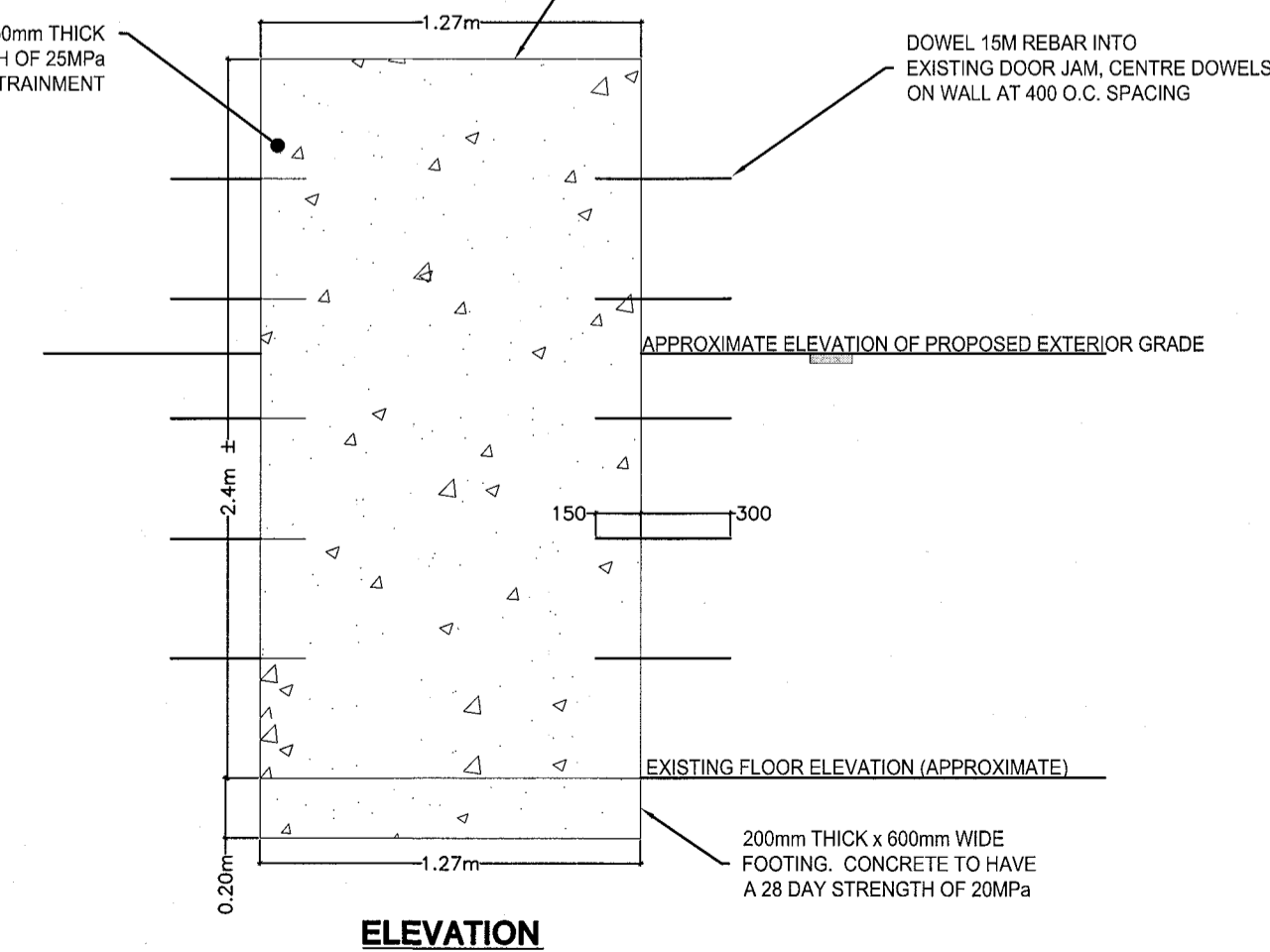


ELEVATION

EXISTING BLOCK WALL REMOVAL
N.T.S.

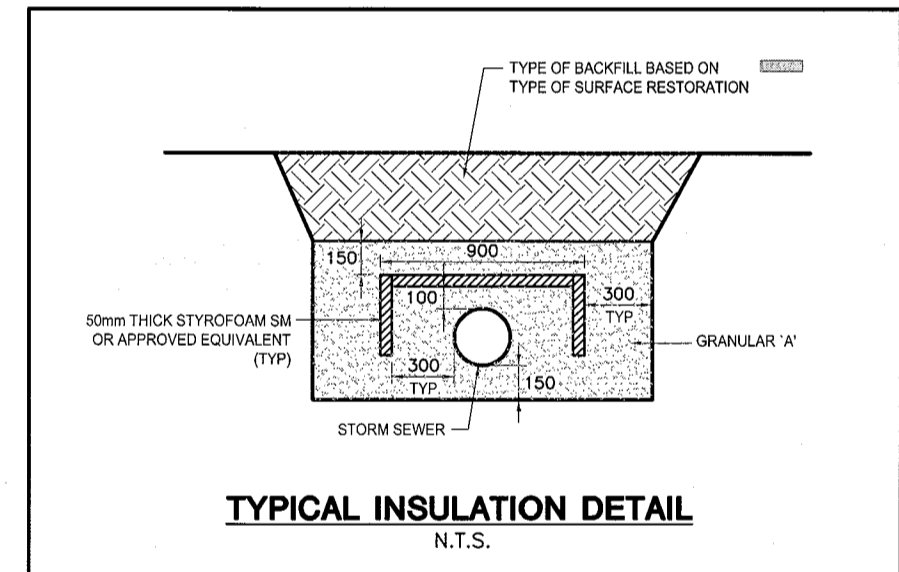


PLAN

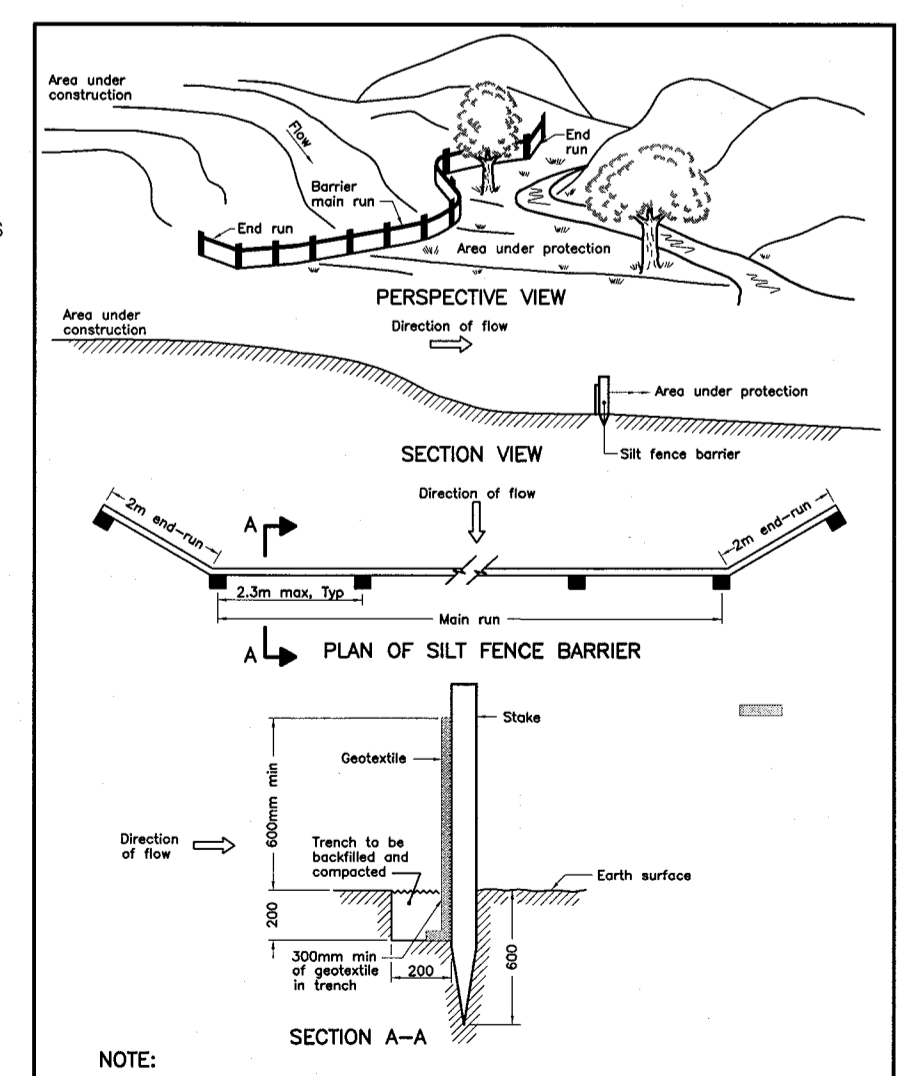


ELEVATION

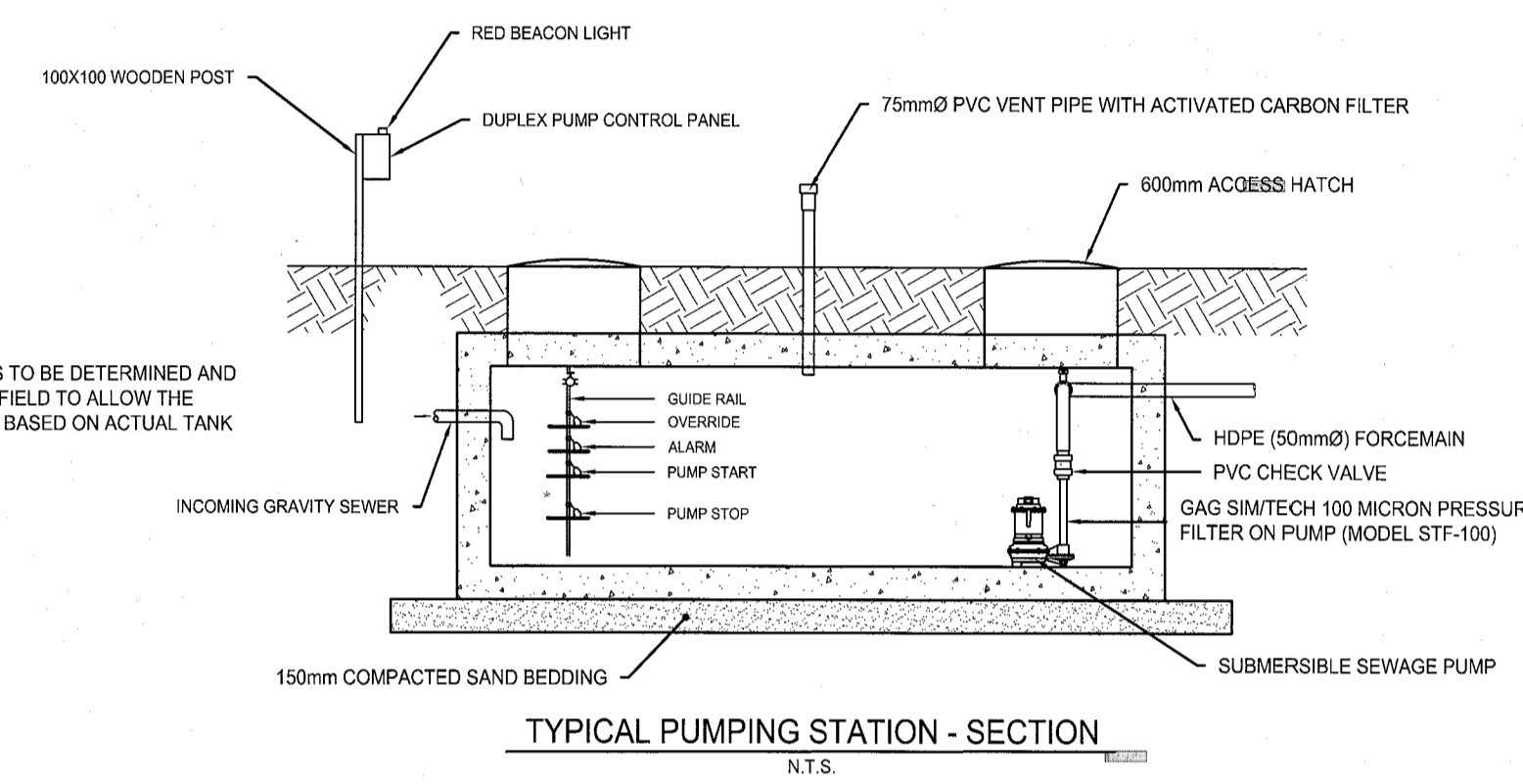
PROPOSED CONCRETE WALL FOR WAREHOUSE BUILDING
N.T.S.



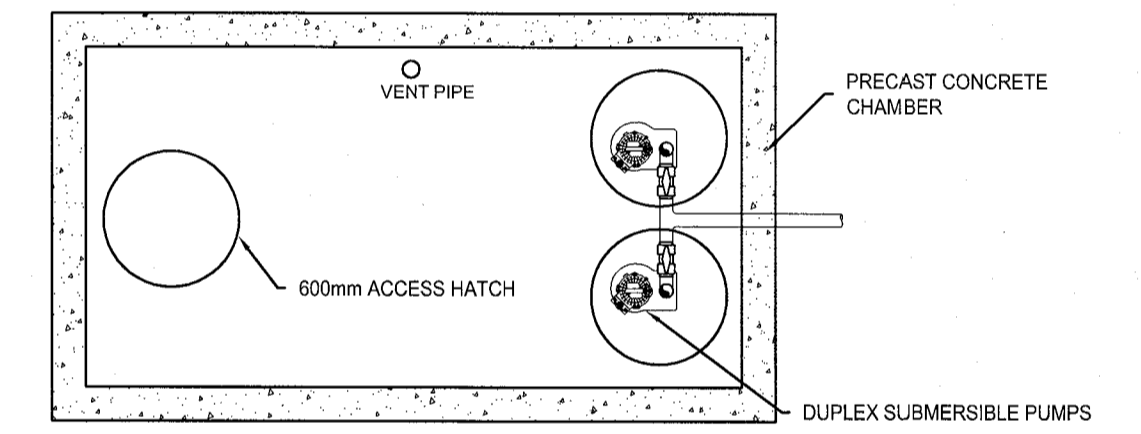
TYPICAL INSULATION DETAIL
N.T.S.



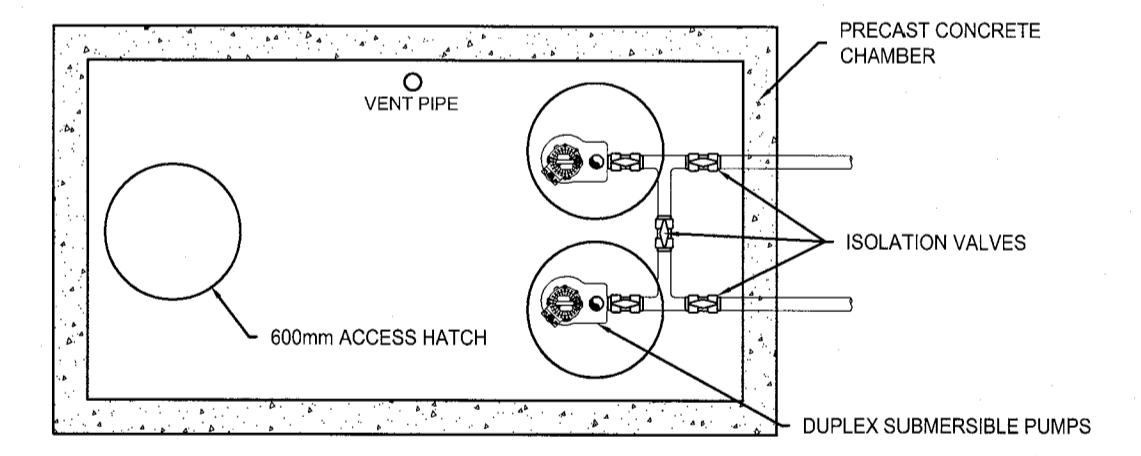
LIGHT DUTY SILT FENCE BARRIER
OPSD - 219.110



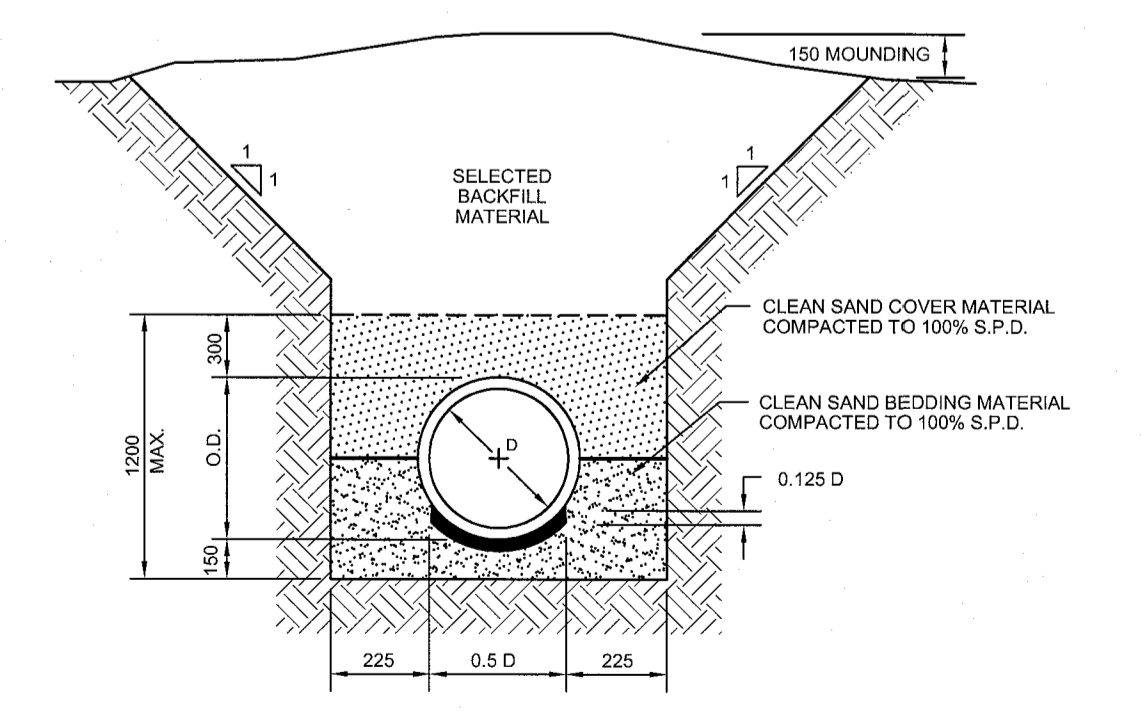
TYPICAL PUMPING STATION - SECTION
N.T.S.



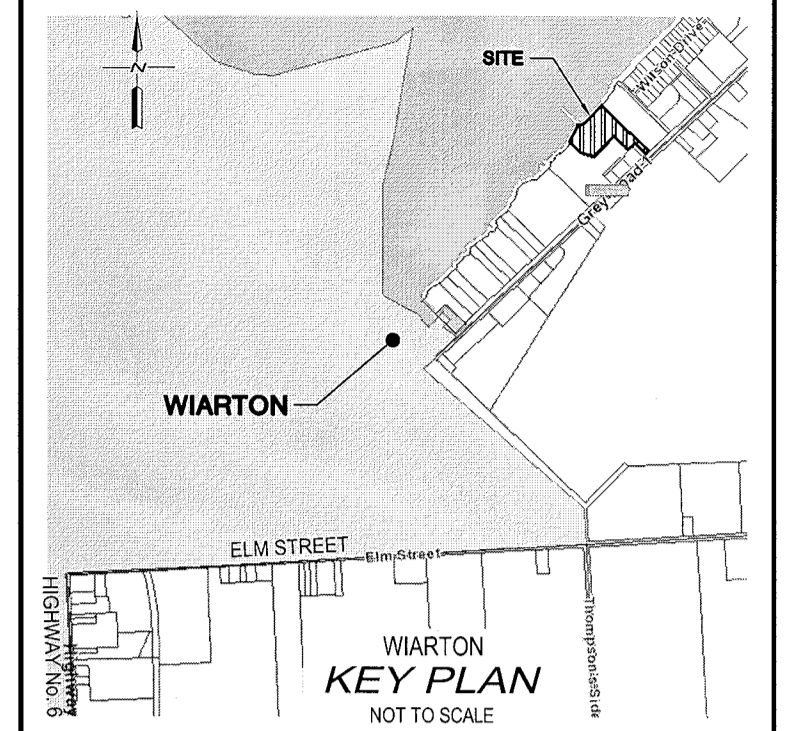
4,500L PUMPING STATION - PLAN
N.T.S.



9,100L PUMPING STATION - PLAN
N.T.S.



SEWER AND FORCEMAIN BEDDING DETAIL
EARTH EXCAVATION
NOTE: FOR TYPE 1 OR TYPE 2 SOILS
N.T.S.

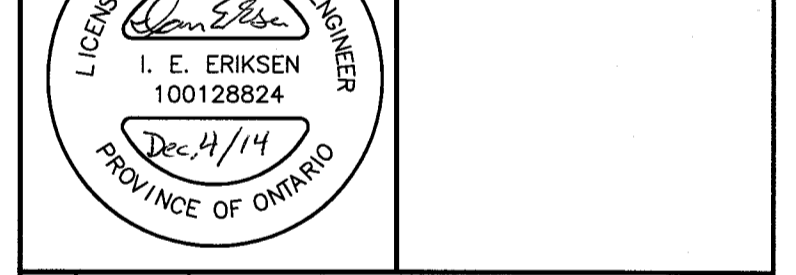


- NOTES:**
- ALL DIMENSIONS AND ELEVATIONS IN METRIC UNLESS OTHERWISE NOTED.
 - LEGAL BOUNDARY SURVEY AND TOPOGRAPHICAL INFORMATION PREPARED BY IVAN DINSMORE LTD DRAWING 10046, REVISION 5, DATED SEPTEMBER 28, 2010.
 - APPROXIMATE EXTENT OF REMEDIATED AREA AS PER FIGURE 2 IN THE PHASE 1 UPDATE OF THE ENVIRONMENTAL SITE ASSESSMENT PREPARED BY TERRAPROBE INC DATED OCTOBER 13, 2010.
 - REFER TO DRAWINGS No. 1 TO 3 PREPARED BY GM BLUEPLAN LIMITED FOR ADDITIONAL DETAILS.
 - FORCEMAINS SHALL BE HIGH DENSITY POLYETHYLENE (HDPE) DR-17, RATED FOR A WORKING PRESSURE OF 100PSI.
 - PRESSURE PIPE AND FITTINGS INSIDE PUMP CHAMBERS SHALL BE SCHEDULE 80 PVC.
 - GRAVITY SEWERS SHALL BE SOLID WALL PVC DR-28 WITH GASKETED BELL AND SPIGOT JOINTS WITH MINIMUM 1.5m COVER.
 - PUMPS (2) TO BE INSTALLED IN 4,500L PUMP CHAMBER ARE MYERS SUBMERSIBLE SEWAGE PUMPS MODEL WHR5 1/2 HP, 115V OR APPROVED EQUIVALENT. ENGINEER TO CONFIRM EQUIVALENCY.
 - PUMPS (2) INSTALLED IN THE 9,100L DOSING CHAMBER ARE MYERS SUBMERSIBLE SEWAGE PUMPS MODEL ME40 1/2 HP, 115V OR APPROVED EQUIVALENT. ENGINEER TO CONFIRM EQUIVALENCY.
 - CONTRACTOR TO OBTAIN ALL PERMITS OTHER THAN BUILDING PERMIT AND SVCA PERMIT (w/ESA, ETC.)

BENCH MARKS:
BENCHMARK No. 1 - TOP OF NUT ON FIRE HYDRANT LOCATED ON EASTERLY SIDE OF GREY ROAD 1 DIRECTLY ACROSS FROM CAFRAMO ENTRANCE. ELEV. = 200.44

THE POSITION OF POLE LINES, CONDUITS, WATERMAINS, SEWERS AND OTHER UNDERGROUND AND OVERGROUND UTILITIES AND STRUCTURES IS NOT NECESSARILY SHOWN ON THE CONTRACT DRAWINGS, AND WHERE SHOWN, THE ACCURACY OF THE POSITION OF SUCH UTILITIES AND STRUCTURES IS NOT GUARANTEED.

BEFORE STARTING WORK, THE CONTRACTOR SHALL INFORM HIMSELF OF THE EXACT LOCATION OF ALL SUCH UTILITIES AND STRUCTURES, AND SHALL ASSUME ALL LIABILITY FOR ANY DAMAGE TO THEM.



NO.	DATE	REVISION DESCRIPTION	CHKD
3	12/03/2014	RE-ISSUED FOR APPROVALS	I.E.E.
2	09/29/2014	ISSUED FOR APPROVALS	I.E.E.
1	08/08/2014	ISSUED FOR CLIENT REVIEW	I.E.E.

BluePlan ENGINEERING

GUELPH | OWEN SOUND | LISTOWEL | KITCHENER | EXETER | HAMILTON | GTA
1260 - 2ND AVENUE EAST, UNIT 1, OWEN SOUND, ON N4K 2J3
TEL: 519-378-1900 www.blueplan.ca

PROPOSED SEWAGE SYSTEM

CAFRAMO LIMITED
501273 GREY ROAD 1,
TOWNSHIP OF GEORGIAN BLUFFS

NOTES AND DETAILS

DRAWN BY: B.T.G.	APPROVED BY: I.E.E.	PROJECT NO.: 214154	DRAWING NO.:
DESIGNED BY: I.E.E.	DATE: JULY 2, 2014	SCALE: AS SHOWN	3

FILE C:\CADD\Projects\1456_007_001.dwg, L:\DWG\1456_007_001.dwg, LAST SAVED BY: I.E.E., 12/03/2014 2:08:00 PM